

St John's Trentham

Church Interior Subcommittee

Proposal for Church Improvements to Special General Meeting

31 October 2021

Agenda

Opening Prayer

Overview of Purpose of the SGM

Presentation of Church Interior
Subcommittee's recommendations

Financials

Motion, Discussion and Vote

Bishop Justin's Charge

At the last Synod, Bishop Justin put this charge to us:

It is not “Where are we heading?” but rather “Who are we becoming?”

The situation in the Diocese is that we are facing declining numbers, an aging church and a secular society. Yet we are still called to preach the gospel in an era where a choice for Jesus is the least choice.

Our confidence needs to be in God. Bishop Justin used Philippians 1:3 for his text and pointed out that ‘you’ in the text is a plural ‘you’ and not an individual one. We are a family of disciples engaged in making disciples and reaching the last the lost and the least. Discipleship is so central, and we need to prioritise the idea of family locally and Diocesan wide. Every faith community is empowered by God to be transformative.

It is not what suits me but what suits the family, how we can rise together. What are others’ needs?

Bishop Justin suggested that the call to be family is more important than ever, yet the temptation can be to project difficulties on each other - yet our mission is to rise up together. He asked us to each ask the question, “Am I taking the temperature down or adding to it?” Have the same mindset as Christ.

We ask that this meeting be about our Parish as a family, what is best for the growth of our family and for our transformation. Frankly, this isn't a proposal about pews or seats and worn carpet. This is a challenge for us to address the future of our Church.

The Subcommittee's Challenge

- Our Church has been used for worship for nearly 160 years and you can feel that.
- It has been added to over its life-time as the needs of the Parish have changed.
- The importance of enhancing the flexibility of the church spaces has been the main driver for these changes. Health and safety concerns and the need to complete deferred maintenance have added to the task.
- At present the church is only used for services at 9am Sunday and 10am Wednesday, and for weddings and funerals. The chapel is used for morning prayer three times a week.
- Without addressing the need to be a more flexible space, to allow more types of use such as the Alpha course, study groups, the 10.30am Sunday service, new and younger parishioners, and even use by external groups, then the church building will fall into disuse and our Church will wither.

Our challenge is to address immediate needs and at the same time make the most of the opportunity to upgrade the church spaces to accommodate the needs and future of our Parish. To make the most of our God provided resources.

Purpose of the SGM

- To invite discussion and questions around the various options considered and those now being recommended by the Subcommittee
- Change can be unsettling and can raise many questions. This is the forum to have a full discussion about any of those questions and to raise any concerns.
- Over time the many various members of the Subcommittee have done their very best to incorporate and address all the known concerns and issues in selecting choices they believe are in the best interests of us all the the long-term health and vitality of the Church
- There is no right answer. This is a process to find the right balance of options that addresses the needs of the future, preserves and respects the history and atmosphere of our place of worship, and fits our budget.
- We are seeking approval from this Special General Meeting of the Parish to make application to the Diocese for approval of the Subcommittee's recommendations for the upgrades and improvements to the Church interior as presented in this proposal

Next Step - Application to the Diocese

- The application to the Diocese sets out the drivers and rationale for these changes, focused on the future mission of the Church and the need to respond to needs of our changing congregation and the needs for flexibility in the Church spaces.
- Our application emphasizes that this proposal is 100% funded with trust money and gifts secured for the express purpose of making improvements to the Church interior and does not impact our operating budget.
- Our application at this time is necessitated by the Diocesan Board meeting timetable, which after 3 November doesn't meet again until February 2022 at the earliest, greatly delaying our plans to make these changes in the first half of 2022.

Looking to the Future and our Mission

Can we bring the 10:30am Sunday service back into the church?

If St John's, Trentham is to remain a place of worship in future decades it is important that the seating is flexible enough to accommodate a variety of styles of worship.

Wider spirituality uses (for example quiet days)

With the advancement of technology what can we do to incorporate this into our services

With more flexible seating could we hold bible studies or courses in the Church? Get the children back in there by having children's activities.

Some of
the
features
people
asked for

More room to accommodate walkers and wheelchairs

A wider aisle for bearers to carry caskets with more dignity and safely

A more flexible worship space

A handrail at the chancel step for safety

A new media system

A kitchenette in the foyer

A more accessible toilet

Let's take you through
the improvements
recommended

1. Seating
2. Kitchenette
3. Accessible toilet
4. Carpet
5. Flat screen TVs
6. Wooden handrails

1. Seating

- Two choices:
 1. Refurbish existing pews
 2. Replace pews with padded chairs
- We asked for quotes for both options
- Either choice needs to allow for a wider aisle

Option 1 – Refurbish pews

Points to consider:

- To keep symmetry of the pews we need to either:
 - Either remove both ends of pew, shorten the seat and then reattach ends, or
 - Cut the pews in half and shorten them that way.
- Some pews are cracked and damaged and will need full restoration
- Strengthening and support needed for all longer pews
- Pew restoration was more expensive in 2 of the 3 quotes (including the one selected) and 2 expressed reservations about the work (hidden costs, quality of the wood, complexity of the build)

Option 2 – Padded chairs

Points to consider:

- To preserve the style in keeping with the look and charm of the historic wooden church
- Some other wooden churches have done this:
 - St John's Feilding had converted their wooden pews into single and two-seater seats.
 - St Mary Magdalene Ashurst had replaced their pews with metal framed chairs.
- We visited these churches and concluded the St John's Feilding approach was suitable
- We commissioned a sample of chairs in this style be constructed from some of the existing pews. These have been available in the foyer chapel for review

St John's, Feilding



The new seats

We asked for quotes from
3 furniture makers for:

- 22 single and
- 66 double chairs

We have since reassessed
and may slightly amend
the mix and reduce the
total number of chairs for
the final contract.

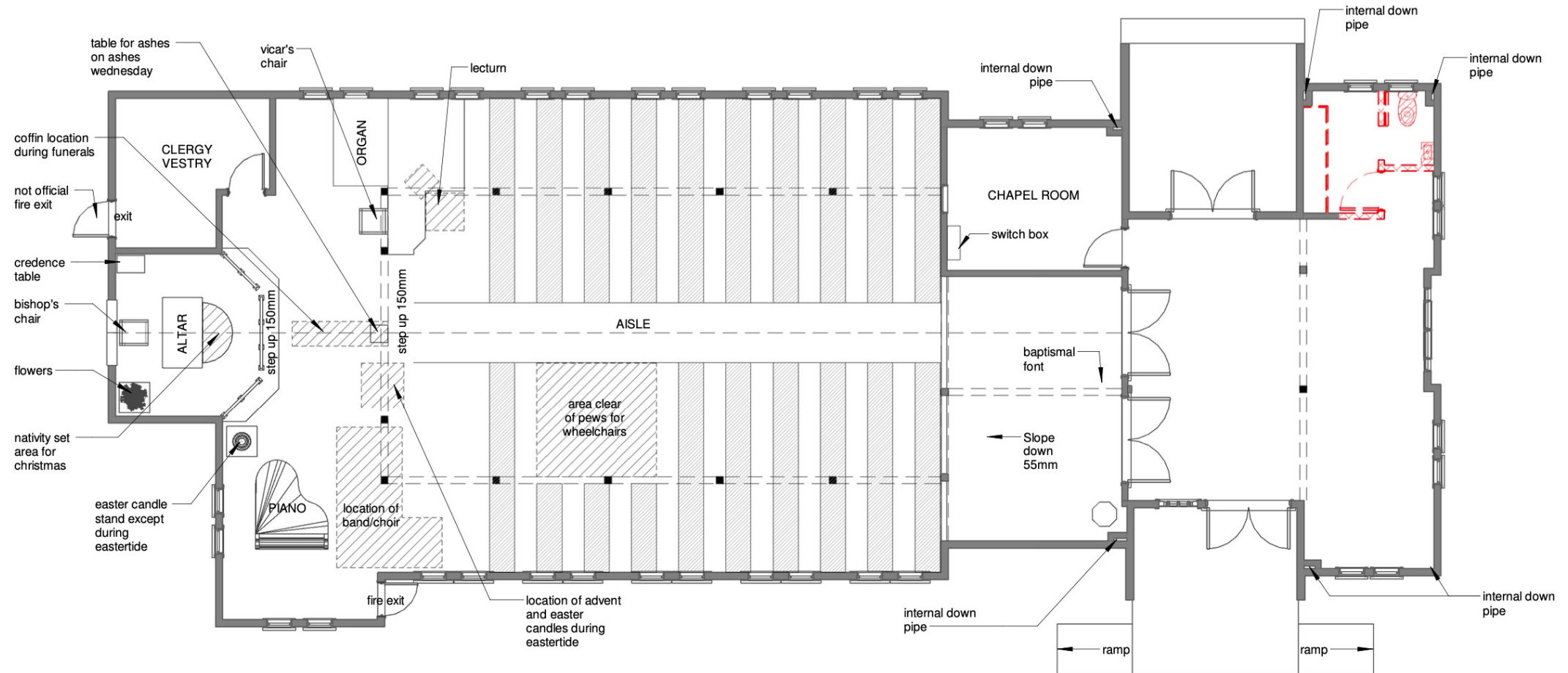


Option 2 – Other issues

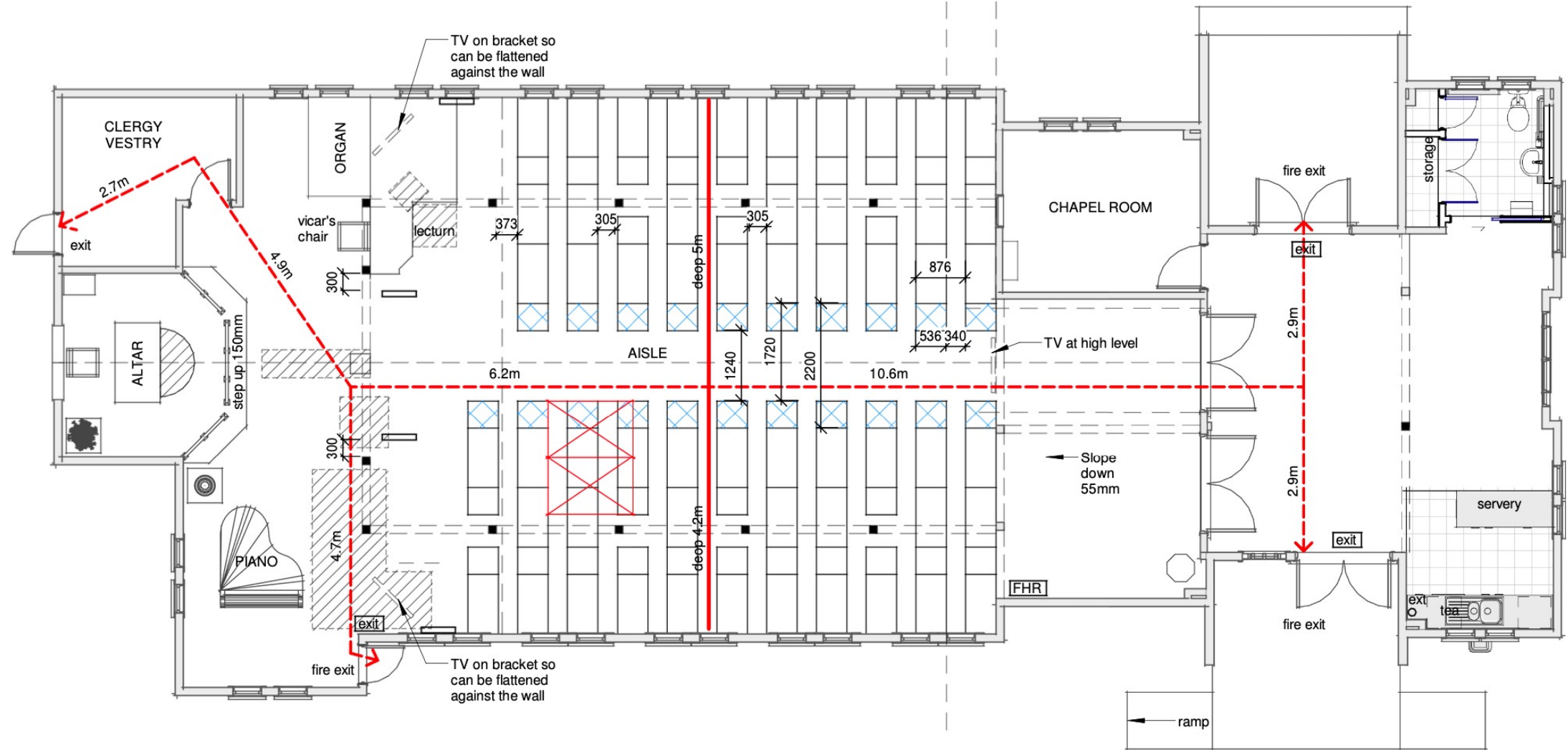
Points to consider:

- Ensure safety and stability of chairs versus pews
 - We consulted St John's Feilding on their experience and they advised they had no issues
 - We consulted a physiotherapist who confirmed there were no issues as the chairs are the same height of the pews. However, they cautioned care until people were used to the new setting as one should in any new surrounding
- Care and cleaning
- Use of anti-inflammatory materials
- To kneel or not to kneel (cushions are an option we can add later if needed)
- Eliminating shelf for prayer and hymn books (less need if using screens but people will need to hold their own materials as shelf adds cost and risk)
- Seating capacity of pew versus chair remains virtually unchanged

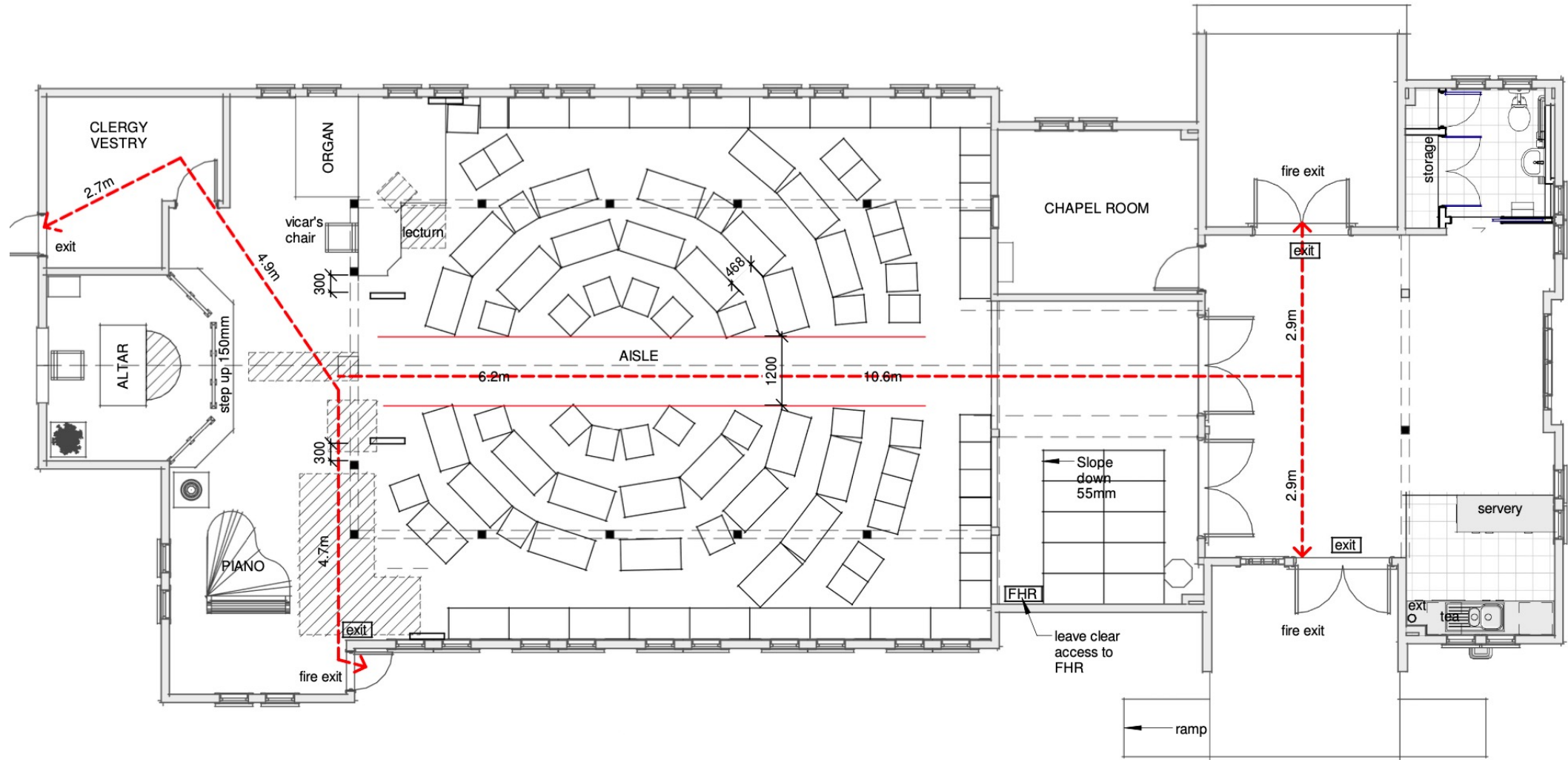
Existing church layout



How a new chair layout would look



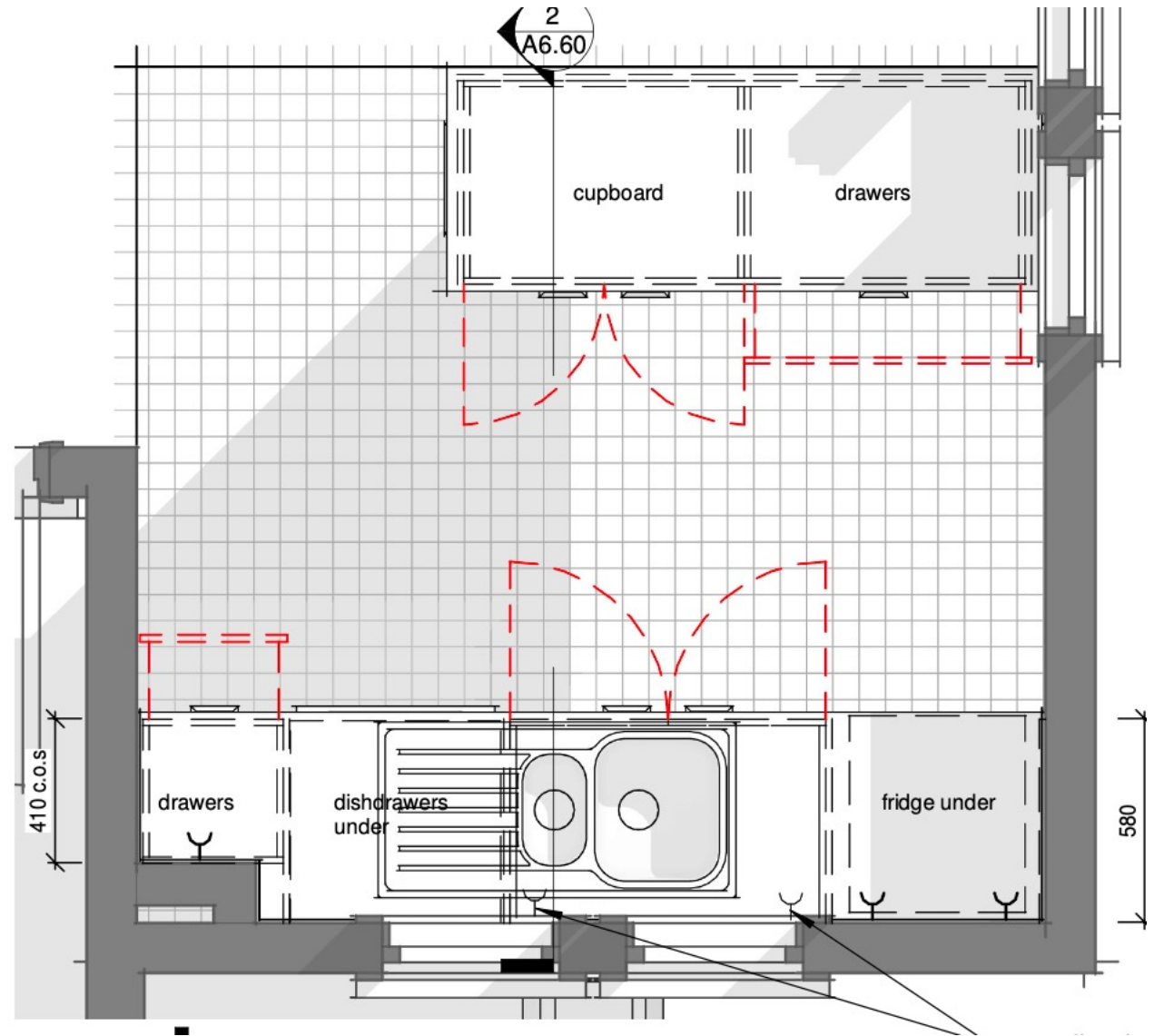
An example of an alternate layout for a group



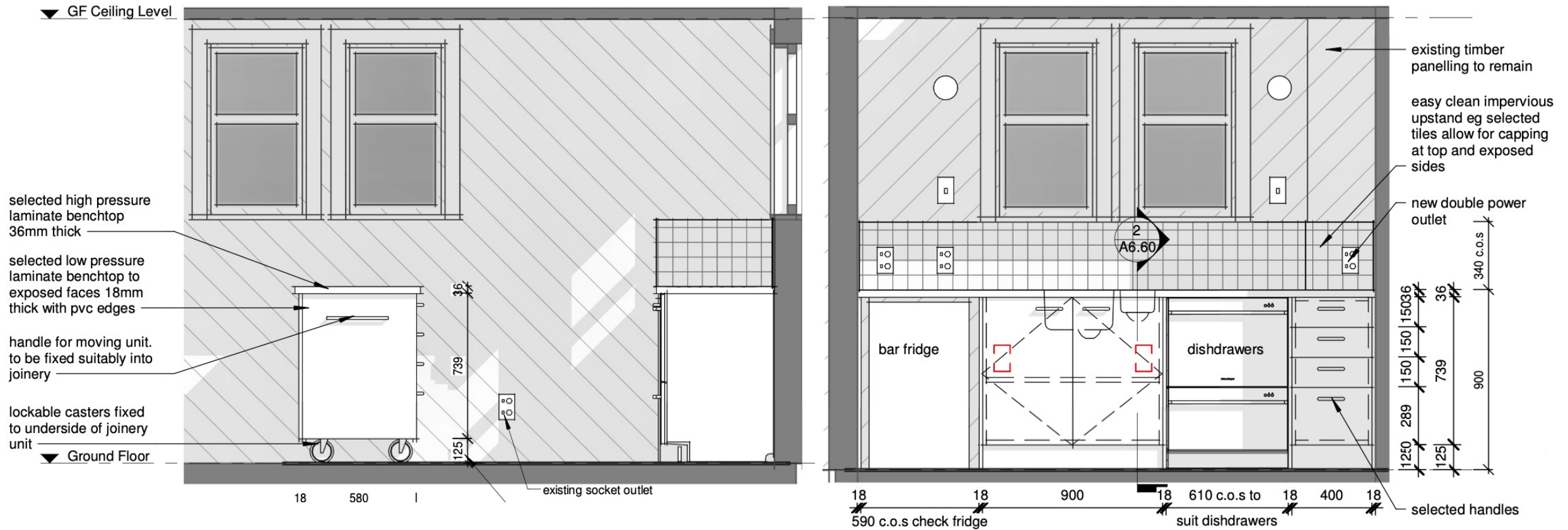
2. Kitchenette

This will provide:

- refreshment facilities including instant hot water, sink, dishwasher drawers, fridge, cleaning, storage and food and beverage serving capability for small groups
- Safer cleaning of eucharist items after services
- Eliminate use of plastic cups
- enhanced appeal of space for use by other groups (eg. Maori Choir)

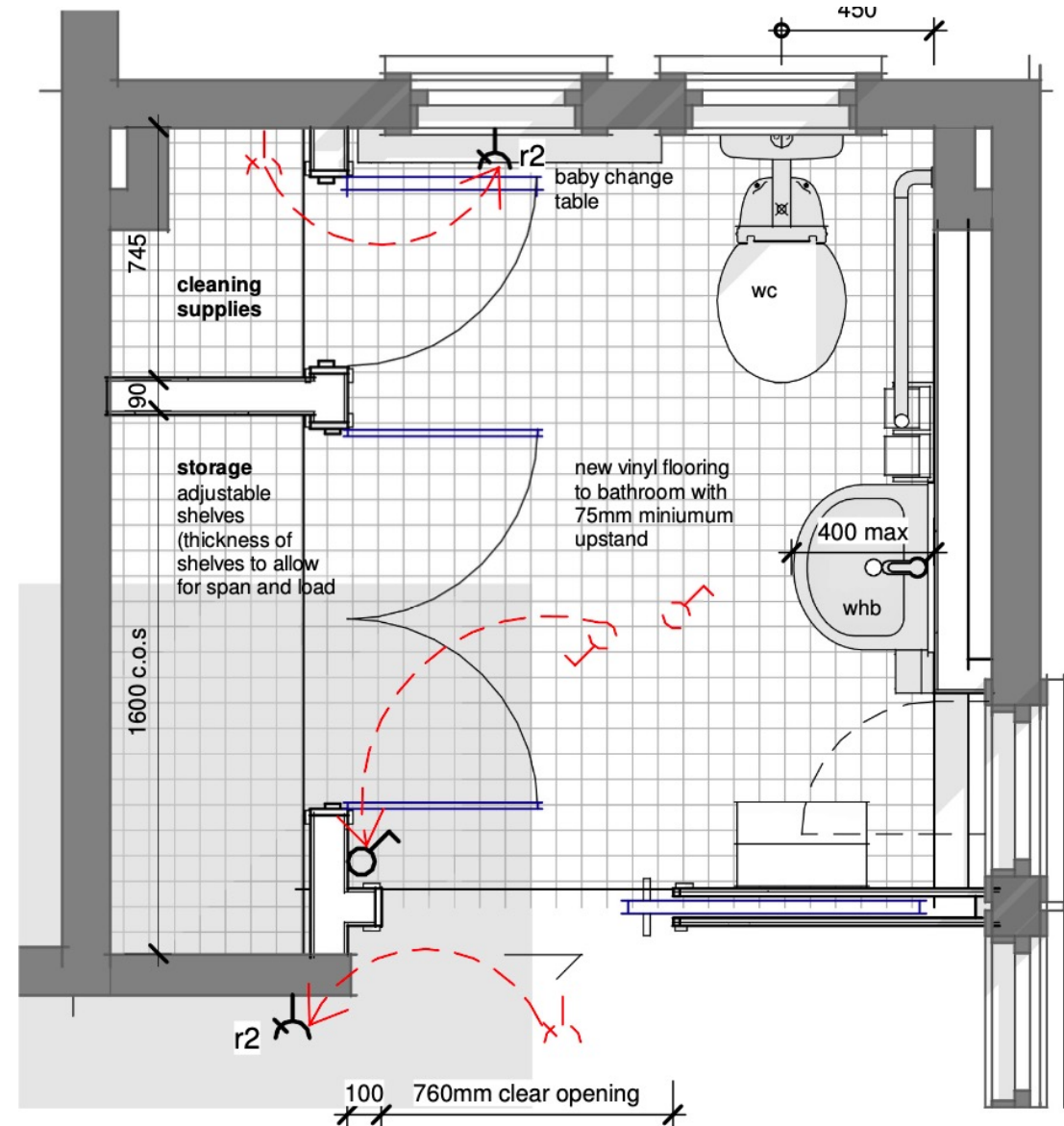


Kitchenette – side and front elevations



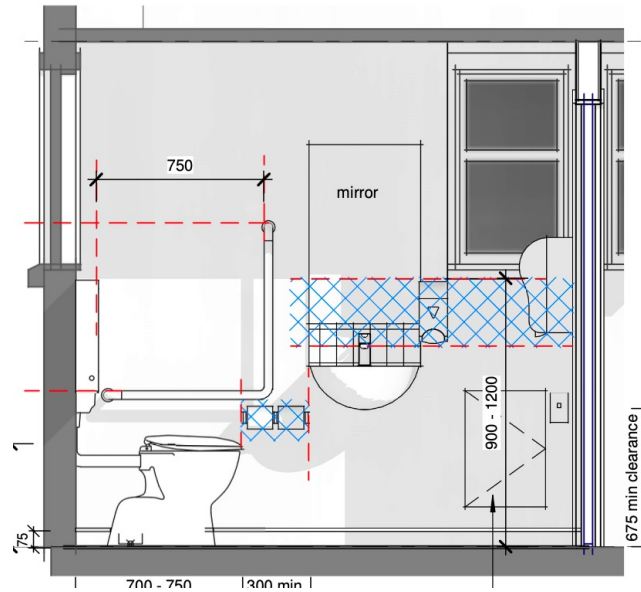
3. Accessible toilet

- Putting in an accessible toilet would enable the Parish to look after parishioners better, and to be hospitable to more of the vulnerable members of our community
- Requires a slight repositioning of the internal walls and toilet door



Toilet - elevations

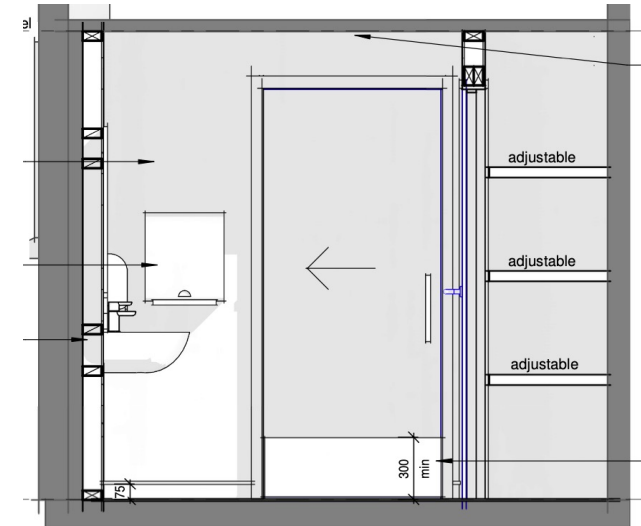
Side elevation



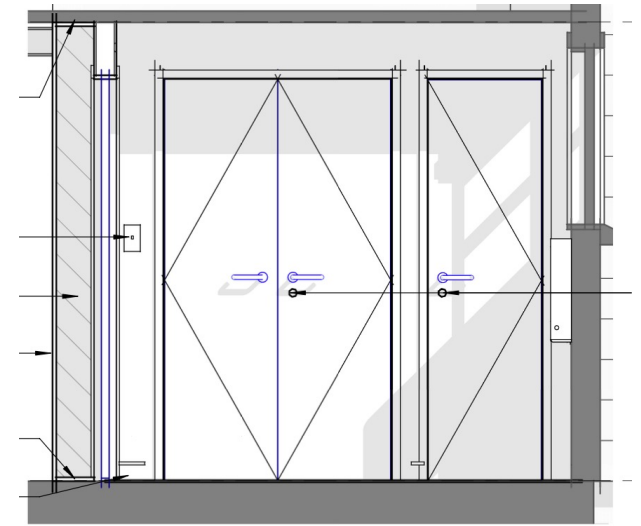
Front elevation



Door from the inside



Storage



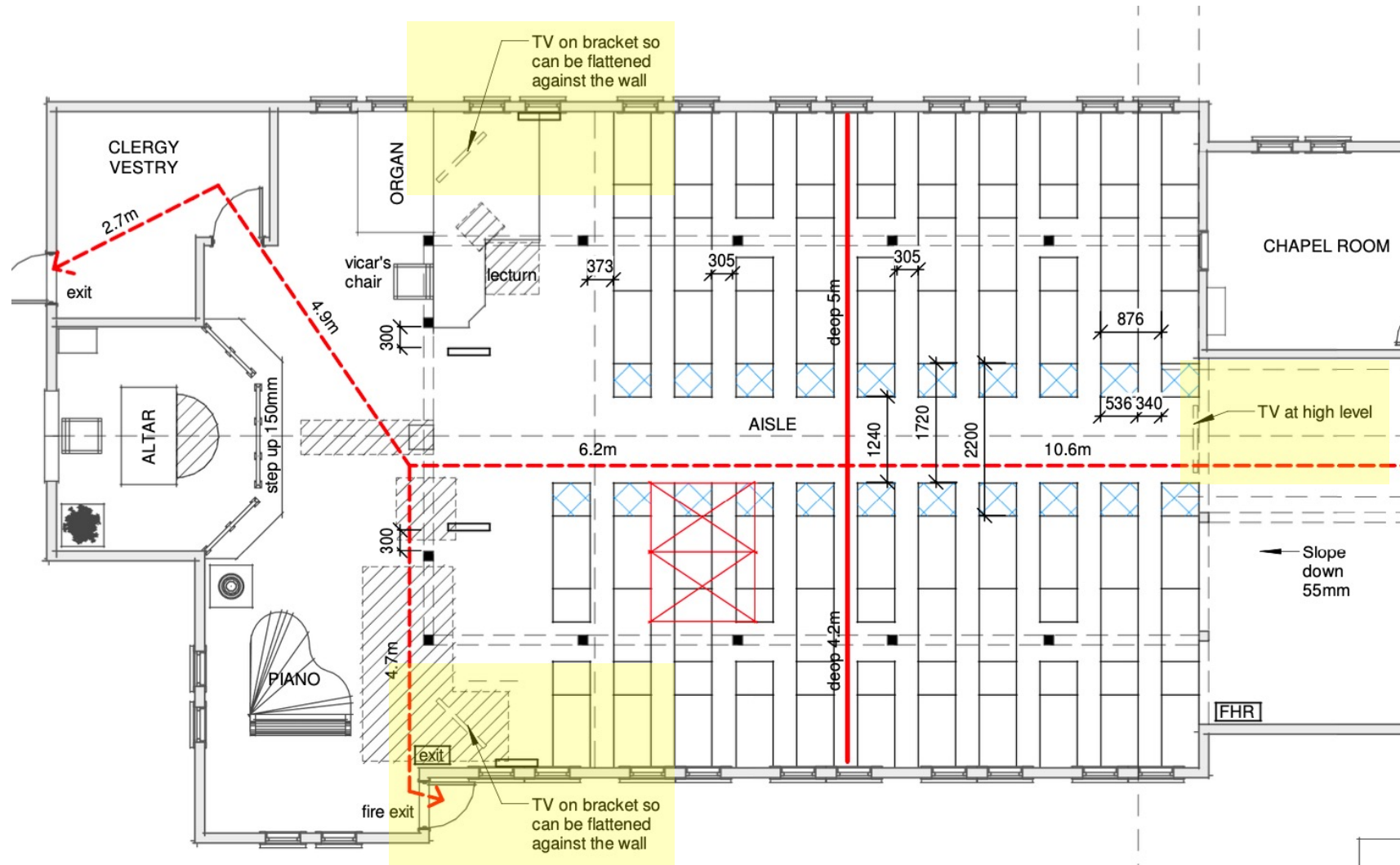
4. Carpet

- Replacement carpet is long overdue
- If we replace the pews with chairs we will need to carpet the whole of the Church, foyer and Chapel – excluding under the piano and organ.
- If we do not replace the pews, then we would replace the carpet similar to the current arrangement.
- Colour same or similar as existing carpet, as availability allows

5. Flat screen TVs

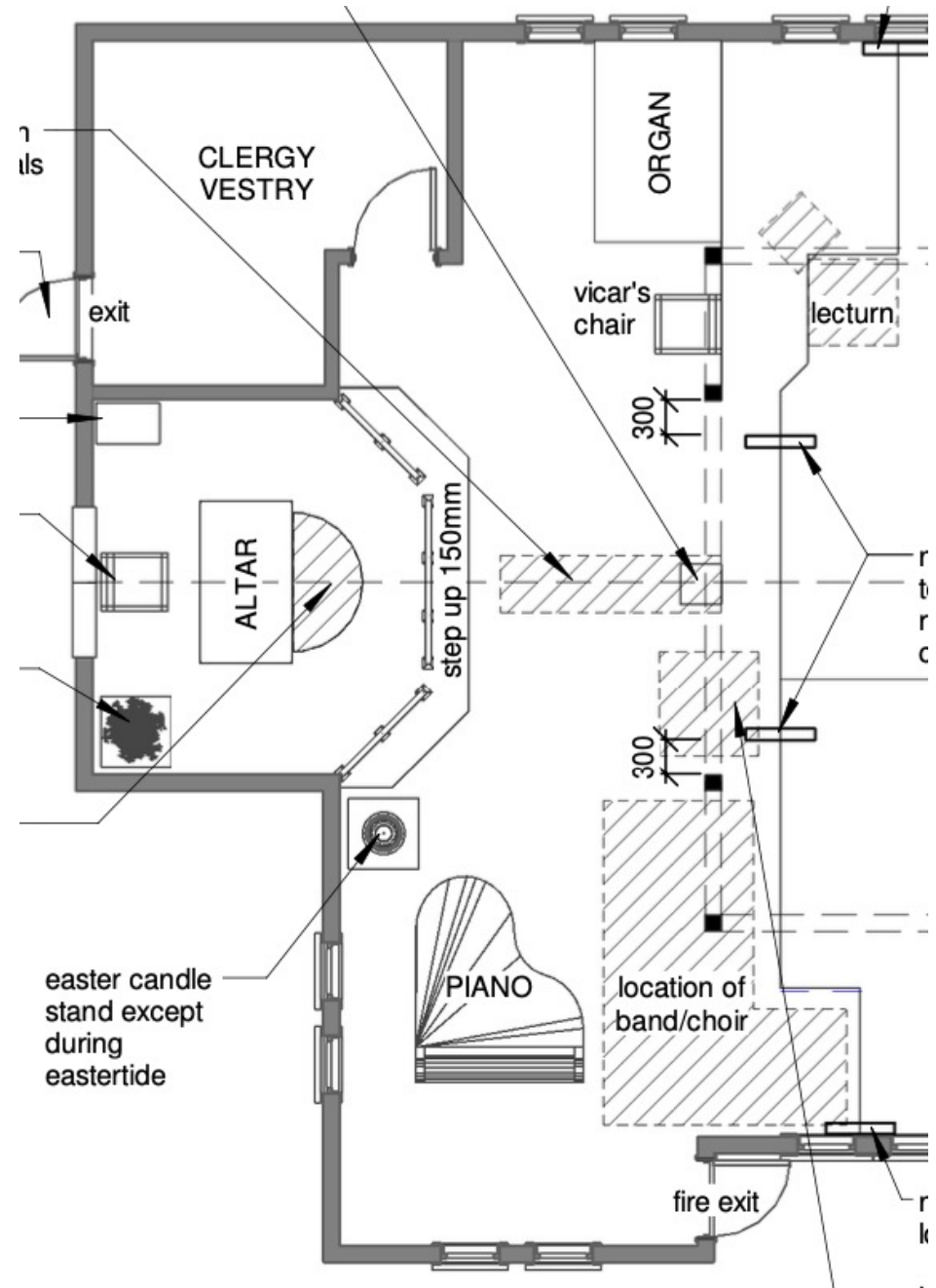
- Time to catch up with the times and go digital, increases options for events and services, attracts youth
- Two TV screens mounted on brackets that can be folded away and a third TV screen at the back so those at the front can see the display
- Less obtrusive than present OHP screen
- Our current sound system is adequate but some updates may be indicated

Proposed screen placements in church



6. Wooden handrails

- Two moveable wooden handrails in the style of Chapman Taylor to echo the altar rails
- Installed at the chancel step



Financials

Element	Cost excl GST	Contingency (20%)	Total excl GST
1. Church Seating	\$30,000	\$6,000	\$36,000
2. Kitchenette	\$30,000	\$6,000	\$36,000
3. Accessibility Toilet	\$20,000	\$4,000	\$24,000
4. Recarpet the Church	\$20,500	\$4,100	\$24,600
5. Install TV screens	\$6,000	\$1,200	\$7,200
6. Moveable wooden rails	\$2,000	\$400	\$2,400
Total estimated costs	\$108,500	\$21,700	\$130,200

Financials

We are fortunate in that we already have 100% of the funding available for this project.

- We have had the benefit of a Trust from the Goodwin Family. Currently, this Trust has a balance as at 30 September of \$163,125.
- In addition, we have a gift of \$20,000 in the name of two recent parishioners who have passed (Ray and Rene Hurle) which has been requested be used for church interior improvements.
- Funds of \$5,000 were also donated for the research and work of the architect.
- We also expect to involve the parish in fund raising by offering individuals and families the opportunity to pay for chairs, commemorated with a plaque noting the donation, as was done for the stained glass windows.
- The above funding sources are not available to meet general Parish operating costs. Nor, as it is fully funded, does this project affect the Parish's annual operating budget.

The 6 Motions put to the SGM for vote and approval

The Parish approves the Church Interior Subcommittee's recommendation and the making of an application to the Diocese for approval to carry out the following improvement to the Church interior with the estimate including contingency for [insert clause below].

1. Replacement of the pews with padded seats using harvested rimu from the existing pews at a cost of \$36,000
2. Construction of a kitchenette in the foyer at a cost of \$36,000
3. Upgrade of the foyer toilet to meet accessibility requirements at a cost of \$24,000
4. Recarpeting of the Church at a cost of \$24,600
5. Installation of flat screen TVs in the Church at a cost of \$7,200
6. Installation of handrails at the chancel step at a cost of \$2,400